

Mathematics Department

Statistics – last study case, 2013

CMA / Statistics and Risk Management



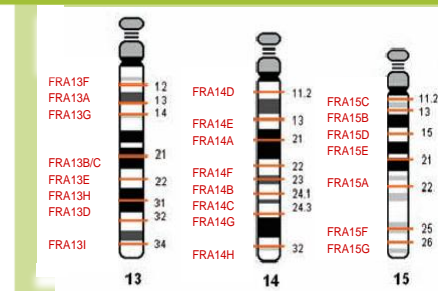
Inês J. Sequeira

Assistant Professor
FCT/UNL

Ph.D. in **Mathematics**
(FCT/UNL, 2009)
M.Sc. in **Actuarial Science**
(ISEG, 2002)
Degree in **Mathematics**
(FCT/UNL, 1998)

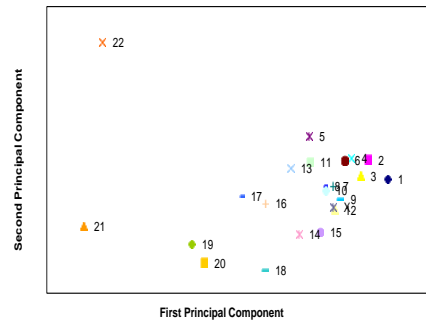
Objectives

Statistical analysis on the predominance of chromosomal rearrangements leading to birth defects in chromosomal fragile regions.



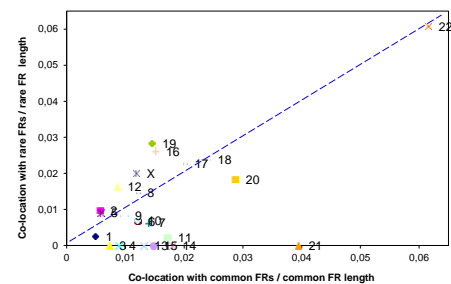
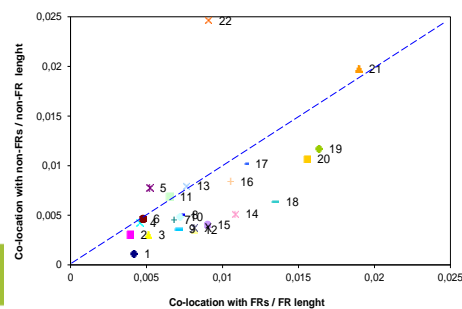
Methodology

- Principal component analysis (PCA)
- Nonparametric Statistics

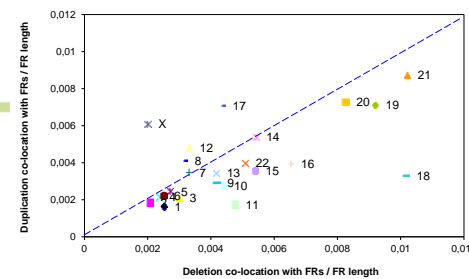


Expected Results

- a predominance of rearrangements in CFRs,
- the absence of statistically significant difference between the frequency of rearrangements in common CFSs vs. rare CFSs
- a predominance of deletions over duplications.



Publish the results in top level research.



Funding: CMA/FCT/UNL, under the project PEst-OE/MAT/UI0297/2011.